

**D-SERIES CRAWLER EXCAVATORS  
CX210D I CX250D**

**CASE**  
CONSTRUCTION



**TIER 4  
FINAL**  
EU STAGE IV

**IT'S TIME  
FOR MORE**

[www.casece.com](http://www.casece.com)

**EXPERTS FOR THE REAL WORLD  
SINCE 1842**

# HERITAGE

## A TRADITION OF INDUSTRY FIRSTS



## EXPERTS FOR THE REAL WORLD SINCE 1842

**1842** Case is founded.

**1869** The first Case portable steam engine - road construction is born.

**1957** The first factory - integrated loader/backhoe in the world: a Case industry first.

**1969** Case begins skid steer loader production.

**1992** Sumitomo becomes supplier to Case Corporation distributing excavators ranging from 7 to 80 tons.

**1998** Global Alliance signed between Case Corporation and Sumitomo.

**2001** Case introduces the first of its CX excavators, powerful new "thinking machines," designed to enhance productivity through onboard intelligence features.

**2007** CX210B is awarded the «Good Design Award» by the design Academy of Japan.

**2008** CX210B wins the 18th «Energy Conservation Award» from the

Agency for Natural Resources and Energy of the Japanese Ministry of Economy.

**2011** Case becomes the first construction equipment manufacturer to offer both selective catalytic reduction and cooled exhaust gas recirculation as solutions to meet stringent emissions standards.

**2015** Case launches the new "D series" Tier 4 final/ EU Stage IV Crawler Excavators.

# CRAWLER EXCAVATORS D-NA

## BUILT TO LAST AND CONTROL



### HIGH RELIABILITY

#### Improved D-esign for D-urable performances

- The boom and arm have been re-designed according to the latest stress analysis criteria to reduce stress points while maintaining weight optimization to ensure the best lifting performance.
- New high strength casting parts with joined hinge flanges reduce stress and increase durability.
- The undercarriage has been re-designed and re-shaped to facilitate the welding process, enhancing the reliability of the fabricated structures.
- The One-Side-Slope lower frame design reduces the time needed to clean the undercarriage.
- The thickness of the structural plates has been increased, especially in those parts where a high level of protection is required for components.

### CASE CX STANDS FOR HIGH QUALITY

#### Accurate, simple and robust design for high durability

- True to Case's enviable reputation for reliability and durability, the D-Series delivers leading design solutions and manufacturing quality.
- Wide choice of arm solutions, including the heavy- duty arm with reinforcement plate and bars on the bottom side.



### HIGH PRECISION AND CONTROLLABILITY

#### Smooth control with the Case Intelligent Hydraulic System

The proven Case Intelligent Hydraulic System (CIHS) delivers impressive machine control with unrivalled energy savings in all cycle time phases (digging, boom up and swing, dumping).



# D-SERIES CRAWLER EXCAVATORS



## HIGH VERSATILITY

Working modes easily adapt to every work load

The familiar working mode systems offers 3 power modes to match different customer needs.

- A** A-MODE for grading, lifting and precision work.
- H** H-MODE the best balance between productivity and fuel economy.
- SP** SP-MODE extra speed and power for the most demanding jobs that require maximum productivity.

Auto Power boost automatically increases hydraulic pressure according to the operation's demands.



## FAST CYCLES

High performance hydraulics control

- The new electrically controlled pumps and a bigger main control valve deliver faster cycle times.
- Oil flow can be adjusted according to working needs, or increased smoothly while starting travel and boom down.
- As a result, the machine responsiveness to operation load is multiplied, resulting in cycle times up to 12% faster than the previous generation.

# PRODUCTIVITY

## IT'S TIME FOR BIGGER PERFORMANCE



### HIGH EFFICIENCY

#### Great performances with low fuel consumption

CASE advanced energy management provides solid fuel saving opportunities and lower emissions, and helps to prolong the life of the machine. It consists of 5 Energy Saving controls:

- Torque control decreases main pump loads to prevent a drop in engine rpm, with improved sensitivity to control/monitor main pump loads
- Boom Economy Control (BEC) Increased fuel efficiency during boom lower and swing operations, like dump unloading
- Swing Relief Control (SWC) Carefully manages the hydraulic power distribution in slewing operations to deliver the most efficient flow and pressure.
- Spool Stroke Control (SSC) Creates an automatic pressure adjustment during digging and leveling operations.
- Idle functions: the Auto Idle function lowers engine RPM after 5 seconds of lever inactivity whatever the throttle position, while the Idle Shutdown function shuts the engine down after 3 minutes of inactivity. Both are manually switchable.



### CLEAN AND MAINTENANCE-FREE POWER

#### EU Stage IV/TIER4 Final compliant Case engines

- Maintenance-free SCR and DOC-only solution
- No Diesel Particulate Filter (DPF) or regeneration are required as no solid particles remain trapped into the system, resulting in maximum uptime and lower operating costs.
- High engine efficiency of the latest generation, electronically controlled, high pressure common rail with multi-injection engine ensures great performances and low fuel consumption.
- Case adds a variable geometry turbo charger to increase exhaust gas recirculation efficiency without losing power.
- High AdBlue Autonomy with the large AdBlue tank (just 1 refill every 5 refuelling stops) and low additive consumption so that Case customers will be able to work longer hours without pause.

# D-SERIES

## CRAWLER EXCAVATORS



### COMFORTABLE AND SAFE CAB

The ultimate interior cab configuration

- Superior cab structure with ample legroom for the operator.
- Fully adjustable workstation
- New ergonomically designed highback seat with air -suspension for excellent comfort.
- Optional seat tilting adjustment and seat heater.
- Top class features include 178 mm colour LED Monitor, bluetooth tuner and Radio, spacious storage compartment, 12v accessory plug, clipboard holder, mobile phone holder, warm and cool box, fuse box service connection, storage tray and ergonomic arm rest.



### SMOOTH RIDE, QUIET WORK ENVIRONMENT

Soundproof pressurised cab

- The cushioning system lowers noise and vibration levels for the operator's ultimate comfort.





# **COMFORT RULES** **FIRST CLASS CAB AND SEAT**



# D-SERIES CRAWLER EXCAVATORS



## SAFE OPERATION

### ROPS cab and FOPS level II

A safe working environment for the operator:

- Reinforced structure of the cab compliant with ROPS/FOPS requirements.
- Standard head protection approved to FOPS Level 2.
- Wide offering of optional front guards.
- Optional factory fitted travel alarm for greater safety on the jobsite around the machine.



## OUTSTANDING VISIBILITY

### Safety-minded cab structure

Cab designed to create a perceptibly safe and secure working environment:

- Ample glazed surface
- Standard rear view camera
- Unique 178 mm LED monitor with continuous camera view
- Efficient use of space with grouped engine, cooling and after-treatment systems to provide excellent rear visibility.
- Optional LED lighting package provides a deeper and wider visibility coverage of the area around the machine when working after dark.





# SAFETY AND MAINTENANCE

## WORK SAFELY IN ALL CONDITIONS



### SAFE ACCESS TO UPPERCARRIAGE

Solid and robust platform  
and handrails

- Wide, robust and comfortable steps for safe access to the top of the hood.
- Solid handrail for protection on the top of the hood.
- Non slip-plates and top hood cover are supported by 2 gas pistons and secured by 2 mechanical stops when open.
- A wide platform (up to 60 cm) on top of the engine compartment to work safely on the engine box.



### SAFE AND EASY MAINTENANCE

Case stays «grounded»

- All filters and regular fill points are grouped for easy access.
- Engine oil change intervals set at 500 hours.
- Radiator and cooler cores mounted side by side for easy access for cleaning and more efficient cooling.
- Standard 100 l/min refueling pump with automatic cut off reduces downtime for regular fills.
- Optional hydraulic and engine oil sampling port accessible at ground level for easy oil check.
- Battery Shutdown Switch for safe maintenance on the electrical system.



# MAIN REASONS TO CHOOSE THE D-SERIES



## HIGH PRECISION AND CONTROLLABILITY

CASE Intelligent Hydraulic System:  
synonymous with high performance  
smooth control.



## HIGH RELIABILITY

Reliability and durability with the new  
redesigned arm, boom and undercarriage.



## HIGH VERSATILITY

- 3 available power modes to match customer needs (A, H, SP)
- Auto Power boost job-sensing hydraulic pressure increase.



## HIGH EFFICIENCY

- Energy saving system to take advantage of all fuel saving opportunities: up to 8% more fuel efficiency
- High levels of AdBlue autonomy with larger AdBlue tank and low additive consumption







### **FAST CYCLES (UP TO 12%)**

- New electronically controlled hydraulic pumps
- New larger main valve



### **OUTSTANDING VISIBILITY**

- Wide glazed area
- Large LED monitor with real time camera focus
- Optional LED lighting package



### **SMOOTH RIDE, QUIET WORK ENVIRONMENT**

- Cab with cushioning system
- Low noise and vibration



### **COMFORTABLE AND SAFE CAB**

- Extra spacious cab
- Fully adjustable workstation
- New high back seat



### **LOW EMISSIONS**

- EU Stage IV/Tier4 final compliant
- No DPF
- DOC and SCR-only maintenance-free components



### **SAFE OPERATION AND MAINTENANCE**

- ROPS cab and FOPS level II
- Standard extended handrails and guardrails
- Optional factory fitted travel alarm







## THE SCIENCE BIT

The Case SiteWatch telematics system uses a high-tech control unit mounted on each machine to collate information from that machine and from GPS satellites. This data is then sent wirelessly through the mobile communication networks to the Case Telematics Web Portal.

### SiteWatch: centralised fleet control benefits at your fingertips

#### Measure your true asset availability and optimise it

- Eliminate the “phantom fleet”: SiteWatch allows to identify spare units or under loaded machines on each site.
- Become able to reallocate units where they are more needed.
- Forward Maintenance Planning is easier since the actualised working hours are always available.
- Extend the benefits of SiteWatch to the rest of your fleet: SiteWatch can be installed on the units of other brands as well.

#### Challenge your Total Cost of Ownership!

- Being able to compare the fuel usage of different machine types will allow you choose the right equipment.
- Save on transport costs with planned and grouped maintenance tasks.
- Peace of mind, optimised uptime and lower repair costs: with preventive maintenance you can for example be alerted if the engine needs to be serviced and avoid a disruptive breakdown.
- Be able to compare your asset Return On Investment on different sites.
- Your equipment is used only during working hours. You can set up alerts so that you know if it is in use during the weekend or at night.
- Integrate with the programmed maintenance package, so that you can be sure every machine is at the right place at the right time.

#### More Safety, Lower Insurance Premium

- Keep thieves away: dissuade them from attacking your asset because it is geo-localised. SiteWatch is hidden so that thieves can't find it quickly.
- Your fleet is used only where you decide. You can define a virtual fence and receive an email when a machine exits that perimeter.



# STANDARD AND OPTIONS

## STANDARD EQUIPMENT

### ENGINE

Isuzu 4-cylinder turbo-charged diesel  
Tier 4 Final/EU stage IV Certified  
Selective Catalytic Reduction – SCR  
Diesel Oxidation Catalyst – DOC  
Cooled Exhaust Gas Recirculation – CEGR  
VGT turbocharger  
Electronic fuel injection  
High pressure common rail system  
Neutral safety start  
Auto-engine warm up, emergency stop  
Glow-plug pre-heat  
EPF (Engine Protection Feature)  
Dual-stage fuel filtration  
Dual element air filter  
Remote oil filter  
Green plug oil drain  
500-hour engine oil change interval  
24-Volt system  
Battery disconnect switch  
High ambient temperature cooling package  
External Fuel and AdBlue gauges  
Fuel cooler  
Fuel filter restriction indicator  
Fuel shut-off valve  
Idle start  
Radiator, oil cooler, intercooler – protective Screen  
Refueling Pump

### FUEL ECONOMY SYSTEMS

Engine Idle/Fuel Economy System:  
Auto-idle  
One-touch idle  
Auto-idle shut-down  
Torque control  
BEC – Boom Economy Control  
SWC – Swing Relief Control  
SSC – Spool Stroke Control

### HYDRAULICS

Electronically controlled hydraulic pumps  
Auto power boost  
Auto travel speed change  
Selectable work modes  
Overload warning device  
ISO pattern controls  
Pre-set auxiliary pump settings  
Switch controlled auxiliary selection  
Auxiliary valve  
Hydraulic filter restriction indicator  
Oil cooler  
5,000 hour hydraulic oil change interval  
1,000 hour hydraulic filter change interval

### UPPERSTRUCTURE

ISO mirrors  
Handrail – RH access  
ISO guard rails  
Isolation mounted cab (fluid and spring)  
Lifting eyes for counterweight  
Lockable fuel cap, service doors and toolbox  
Rear view safety camera

### OPERATOR STATION

ROPS protection  
FOPS guard OPG level II  
Pressurized cab  
Tempered safety glass  
One-touch lock front window  
Sun visor&rain deflector  
AC/heat/defrost w/auto climate control  
Hot&coolbox, cup holder & ashtray  
Interior dome light  
Cloth covered air-suspension high-back seat  
Sliding seat – 90 mm  
Seat-belt  
Adjustable armrests  
Tilting consoles - 4-position  
Low-effort joystick controls

Sliding cockpit 180 mm  
Auxiliary select system  
Aux-in port for personal electronics  
Multifunction LED color monitor (180 mm)  
26 selectable languages for monitor  
Anti-theft system (start code system)  
Rubber floor mat  
12-volt electric socket  
24-volt cigarette lighter  
One-piece right hand window  
2 internal & 3 external view mirrors  
2 working lights (boom&upperstructure)  
2 cab top working lights  
Windshield wiper / washer  
Clear (Lexan) roof window w/sunshade  
Storage compartments  
On-board diagnostic systemTorque control

### ATTACHMENTS

#### CX210D

Standard boom 5.7 m  
2 piece boom  
Long Reach boom 8.7 m (CX210D Long Reach)  
Arm 2.40 m (CX210D)  
Arm 6.40 m (CX210D Long Reach)

#### CX250D

Standard boom 5.85 m  
Long Reach boom 10.3 m (CX250D Long Reach)  
Arm 3.00 m (CX250D)  
Arm 8.00 m (CX250D Long Reach)  
Boom mounted work light  
Auxiliary pipe brackets  
Centralized lube bank  
Attachment cushion valve

### UNDERCARRIAGE

600 mm steel shoes, triple semi grouser  
Full overlap turntable bearing tub  
Sealed link chain  
Lashing points

## OPTIONAL EQUIPMENT

### OPTIONAL HYDRAULICS

Clamshell circuit  
Low-flow circuit, proportional control  
Single acting pedal activated hammer circuit  
Single acting hammer circuit with electrical proportional control  
Pedal activated multifunction (hammer/high flow) circuit  
Multifunction (hammer/high flow) circuit with electrical proportional control

### OPTIONAL HYDRAULICS LONG REACH ONLY

Clamshell circuit  
Low-flow circuit, proportional control  
Double acting with electrical proportional control

### ATTACHMENTS

#### CX210D

Arm HD 1.90 m (CX210D)  
Arm 2.94 m

#### CX250D

Arm HD 2.5m (CX250D)  
Arm 3.52 m (CX250D)  
Hydraulic quick coupler provision  
Safety valves and bucket linkage with hook

### OPERATOR STATION

Front cab guard - vertical bars (OPG level 2)  
Front cab guard - vertical bars (OPG level 1)  
Front mesh screen  
Travel alarm

AM/FM CD/radio with antenna and 2-speakers  
LED working lights  
Side view camera with LED lights (right and left)

### UNDERCARRIAGE

Steel shoes, triple semi-grouser  
500 mm (CX210D NLC only)  
700 mm, 800mm  
900 mm (CX210D for swamp, CX250D)  
600mm rubber link chains (CX210D only)  
Triple track guide

### TELEMATICS

Three (3) year SiteWatch “Advanced” subscription with remote monitoring and one user’s licence

# CX D-SERIES

## CX210D

### ENGINE

Model \_\_\_\_\_ ISUZU AR-4HK1X  
 Type \_\_\_\_\_ Water-cooled, 4-cycle diesel, 4-cylinder in line, High pressure common rail system (electric control), Turbocharger with air cooled intercooler, SCR system.  
 Number of cylinders / Displacement \_\_\_\_\_ 4 / 5,2 l  
 Emissions level \_\_\_\_\_ Tier 4 final / Eu stage IV  
 Bore & stroke \_\_\_\_\_ 115 mm x 125 mm  
**Rated flywheel horse power**  
 SAE J 1349, ISO 9249 \_\_\_\_\_ 119.3 kW / 162 hp at 1800 min<sup>-1</sup>  
 ISO 14396 \_\_\_\_\_ 124 kW / 168.6 hp at 1800 min<sup>-1</sup>  
**Maximum torque**  
 SAE J 1349, ISO 9249 \_\_\_\_\_ 621 Nm at 1600 min<sup>-1</sup>  
 ISO 14396 \_\_\_\_\_ 637 Nm at 1600 min<sup>-1</sup>

### HYDRAULIC SYSTEM

Main pumps \_\_\_\_\_ 2 variable displacement axial piston pumps with regulating system  
 Max. oil flow \_\_\_\_\_ 2 x 211 liter/min at 1800 min<sup>-1</sup>  
**Working circuit pressure**  
 Boom/Arm/Bucket \_\_\_\_\_ 34.3 MPa - 37.3 MPa with auto power boost  
 Swing circuit \_\_\_\_\_ 29.4 MPa  
 Travel circuit \_\_\_\_\_ 34.3 MPa  
 Pilot pump \_\_\_\_\_ 18 liter/min  
 Working circuit pressure \_\_\_\_\_ 3.9 MPa  
**Boom Cylinders**  
 Bore \_\_\_\_\_ 120 mm  
 Stroke \_\_\_\_\_ 1255 mm  
**Boom Positioning (2 piece boom only)**  
 Bore \_\_\_\_\_ 100 mm  
 Stroke \_\_\_\_\_ 1090 mm  
**Arm Cylinder**  
 Bore \_\_\_\_\_ 140 mm  
 Stroke \_\_\_\_\_ 460 mm  
**Bucket Cylinder**  
 Bore \_\_\_\_\_ 120 mm  
 Stroke \_\_\_\_\_ 1010 mm

### PERFORMANCE DATA MONO LC-NLC

		Arm 2.40 m	Arm HD 1.91 m	Arm 2.94 m
Boom length	mm	5700	5700	5700
Bucket radius	mm	1450	1450	1450
Bucket wrist action	°	177	177	177
A Maximum reach at GRP	mm	9240	8770	9730
B Maximum reach	mm	9420	8960	9900
C Max. digging depth	mm	6110	5610	6650
D Max. digging height	mm	9390	9140	9610
E Max. dumping height	mm	6590	6330	6810
F Min. swing radius	mm	3620	3590	3660

### DIGGING FORCE (ISO 6015)

		Arm 2.40 m	Arm HD 1.91 m	Arm 2.94 m
Arm digging force	kN	123	142	103
with Auto power boost	kN	133	154	112
Bucket digging force	kN	142	142	142
with Auto power boost	kN	154	154	154

### SWING

Swing Motor \_\_\_\_\_ Fixed displacement axial piston motor  
 Maximum swing speed \_\_\_\_\_ 11.5 min<sup>-1</sup>  
 Swing torque \_\_\_\_\_ 64,000 Nm

### FILTERS

Suction filter \_\_\_\_\_ 105 µm  
 Return filter \_\_\_\_\_ 6 µm  
 Pilot line filter \_\_\_\_\_ 8 µm

### ELECTRICAL SYSTEM

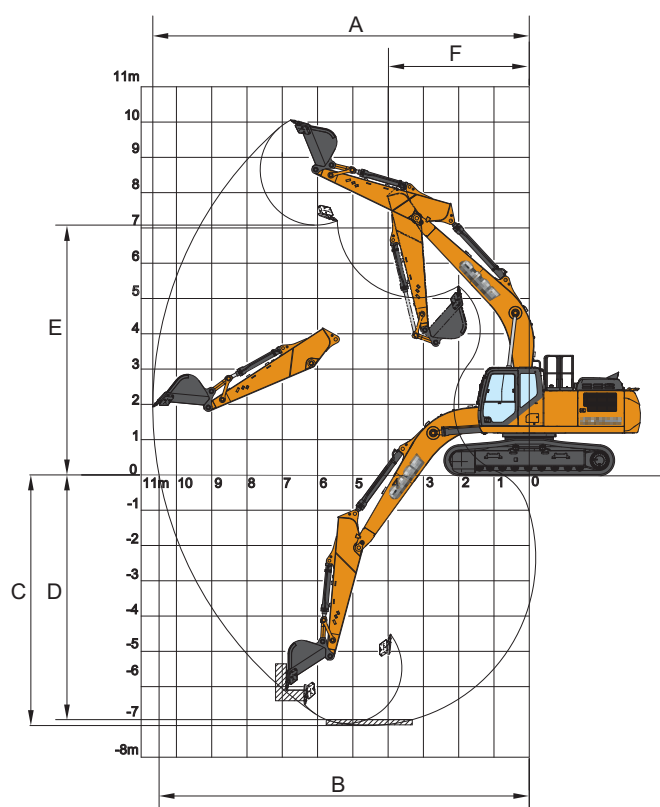
Voltage \_\_\_\_\_ 24 V  
 Alternator \_\_\_\_\_ 50 Amp  
 Starter \_\_\_\_\_ 24 V 5.0 kW  
 Battery \_\_\_\_\_ 2X12V 128 Ah/5 HR

### UNDERCARRIAGE

Travel motor \_\_\_\_\_ Variable displacement axial piston motor  
 High travel speed (Automatic travel speed shifting) \_\_\_\_\_ 5.6 km/h  
 Low travel speed \_\_\_\_\_ 3.4 km/h  
 Drawbar pull \_\_\_\_\_ 188 kN  
 Number of carrier rollers (each side) \_\_\_\_\_ 2  
 Number of track rollers (each side) \_\_\_\_\_ 8  
 Number of shoes (each side) \_\_\_\_\_ 49  
 Type of shoe \_\_\_\_\_ Triple grouser shoe  
 Grade ability \_\_\_\_\_ 70 % (35°)

### CIRCUIT AND COMPONENT CAPACITIES

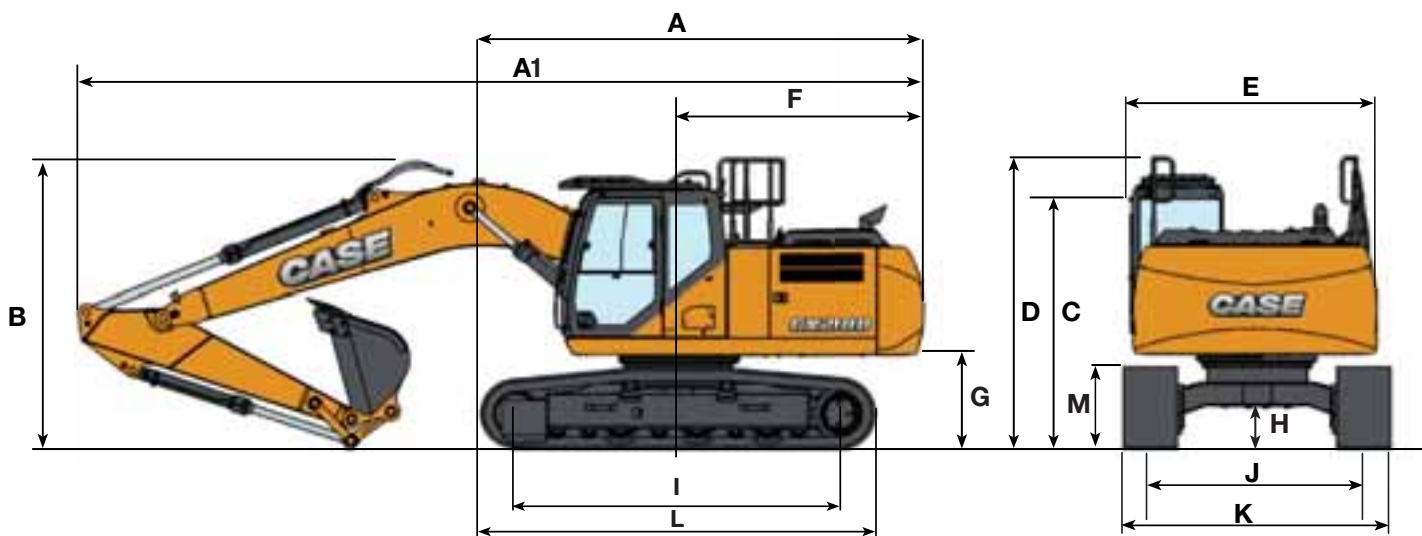
	LC	NLC
Fuel tank (l)	410	320
Hydraulic system (l)	250	220
Hydraulic tank (l)	147	117
Addblue tank (l)	120	85





# SPECIFICATIONS

## GENERAL DIMENSIONS MONO LC-NLC



		Arm 2.40 m	Arm HD 1.91 m	Arm 2.94 m
A	Overall length (without attachment)	mm	5000	5000
A1	Overall length (with attachment)	mm	9510	9430
B	Overall height (to top of boom)	mm	3240	3150
C	Cab height	mm	3070	3070
D	Overall height (to top of guardrail)	mm	3280	3280
E	Upper structure overall width (LC/NLC)	mm	2770 / 2530	2770 / 2530
F	Swing (rear end radius)	mm	2790	2790
G	Clearance height under upper structure	mm	1050	1050
H	Minimum ground clearance	mm	440	440
I	Wheel base (Center to center of wheels)	mm	3660	3660
L	Crawler overall length	mm	4470	4470
M	Crawler tracks height	mm	920	920
J	Track gauge (LC/NLC)	mm	2390 / 1990	2390 / 1990
K	Undercarriage overall width (LC with 600mm shoes / NLC with 500 mm shoes)	mm	2990 / 2490	2990 / 2490

## WEIGHT AND GROUND PRESSURE MONO LC-NLC

With 2.40 m arm, 1.0 m<sup>3</sup> bucket, operator, lubricant, coolant, full fuel tank and top guard OPG level 2.

LC	Weight	Ground pressure
600 mm grouser shoe	21700 kg	0.045 MPa
700 mm grouser shoe	22140 kg	0.040 MPa
800 mm grouser shoe	22440 kg	0.036 MPa

Counter weight 3920 kg

With 2.40 m arm, 1.0 m<sup>3</sup> Sumitomo bucket, 500 mm grouser shoe, operator, lubricant, coolant and full fuel tank and top guard OPG level 2

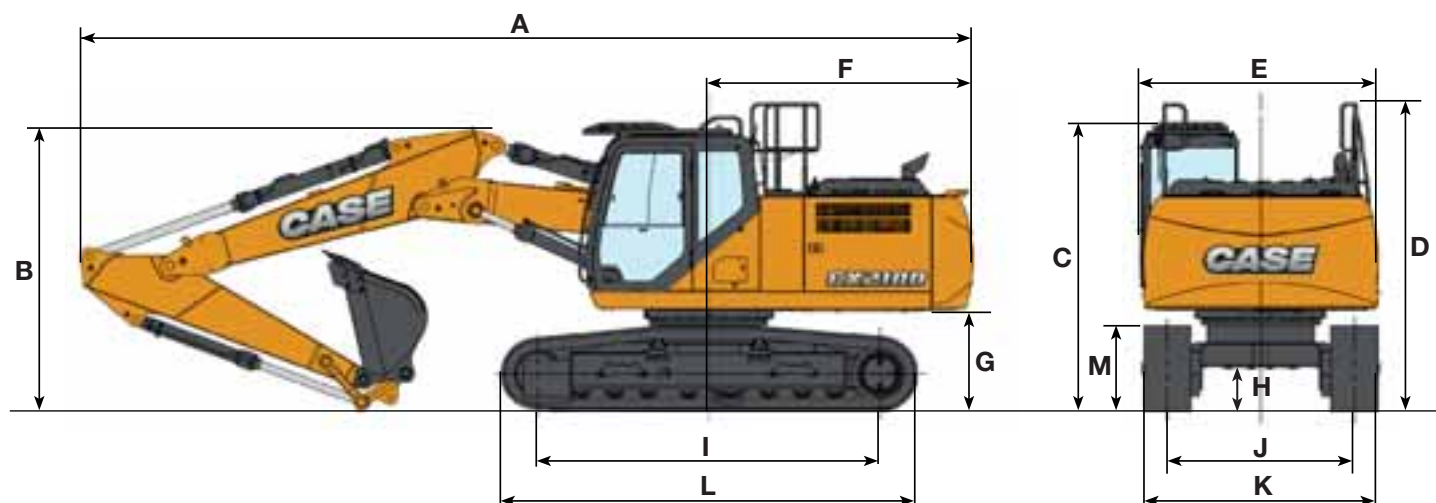
NLC	Weight	Ground pressure
500 mm grouser shoe	21800 kg	0.054 Mpa

Counter weight mass 4150 kg

# CX D-SERIES

## CX210D

### GENERAL DIMENSIONS LC-NLC 2 PIECE BOOM



		Arm 2.40 m	Arm 1.91 m	Arm 2.94 m
Overall length (without attachment)	mm	5060	5060	5060
A Overall length (with attachment)	mm	9540	9570	9480
B Overall height (to top of boom)	mm	3040	2950	2890
C Cab height	mm	3100	3100	3100
D Overall height (to top of guardrail)	mm	3310	3310	3310
E Upper structure overall width	mm	2530	2530	2530
F Swing (rear end radius)	mm	2830	2830	2830
G Clearance height under upper structure	mm	1080	1080	1080
H Minimum ground clearance	mm	430	430	430
I Wheel base (Center to center of wheels)	mm	3660	3660	3660
L Crawler overall length	mm	4460	4460	4460
M Crawler tracks height	mm	920	920	920
J Track gauge (LC/NLC)	mm	2390 / 1990	2390 / 1990	2390 / 1990
K Undercarriage overall width (LC with 600mm shoes / NLC with 500 mm shoes)	mm	2990 / 2490	2990 / 2490	2990 / 2490

### PERFORMANCE DATA LC-NLC 2 PIECE BOOM

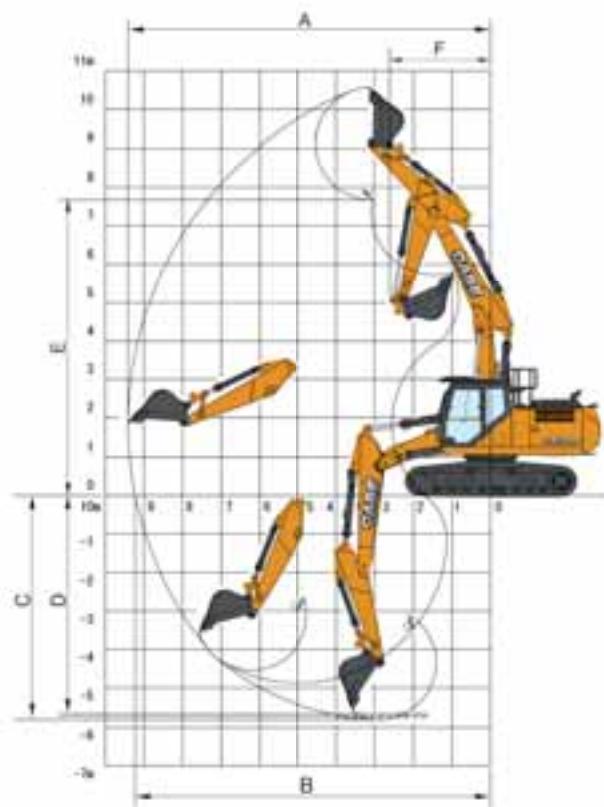
		Arm 2.40 m	Arm 1.91 m	Arm 2.94 m
1 <sup>st</sup> boom length	mm	2960	2960	2960
2 <sup>nd</sup> boom length	mm	2790	2790	2790
Bucket radius	mm	1450	1450	1450
Bucket wrist action	°	177	177	177
A Maximum reach at GRP	mm	9220	8760	9730
B Maximum reach	mm	9420	8950	9900
C Max. digging depth	mm	5800	5310	6320
D Max. digging height	mm	10580	10210	10940
E Max. dumping height	mm	7680	7320	8040
F Min. swing radius	mm	2830	2830	2830

### WEIGHT AND GROUND PRESSURE

with 2.40 m Arm, 1.0 m<sup>3</sup> bucket, operator, lubricant, coolant, full fuel tank and top guard OPG level 2.

NLC	Weight	Ground pressure
500 mm grouser shoe	23700 kg	0.059 MPa
LC - 2 PIECE BOOM		
500 mm grouser shoe	23700 kg	0.059 MPa

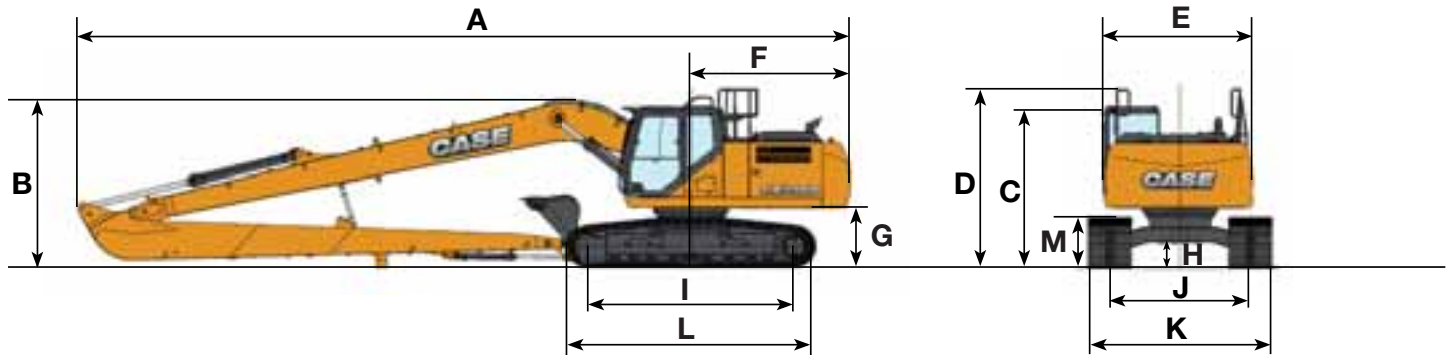
Counterweight 4.150 kg



# CX SERIE D

## CX210D LONG REACH

### GENERAL DIMENSIONS



#### Arm 6.40 m

Overall length (without attachment)	mm	5000
A Overall length (with attachment)	mm	12520
B Overall height (to top of boom)	mm	3000
C Cab height	mm	2950
D Overall height (to top of guardrail)	mm	3280
E Upper structure overall width	mm	2770
F Swing (rear end radius)	mm	2790
G Clearance height under upper structure	mm	1050
H Minimum ground clearance	mm	440
I Wheel base (Center to center of wheels)	mm	3660
L Crawler overall length	mm	4470
M Crawler tracks height	mm	920
J Track gauge	mm	2390
K Undercarriage overall width (NLC with 800 mm shoes)	mm	3190

### DIGGING FORCE (ISO 6015)

#### Arm 6.40 m

Arm digging force	46 kN
Bucket digging force	65 kN

### PERFORMANCE DATA

#### Arm 6.40 m

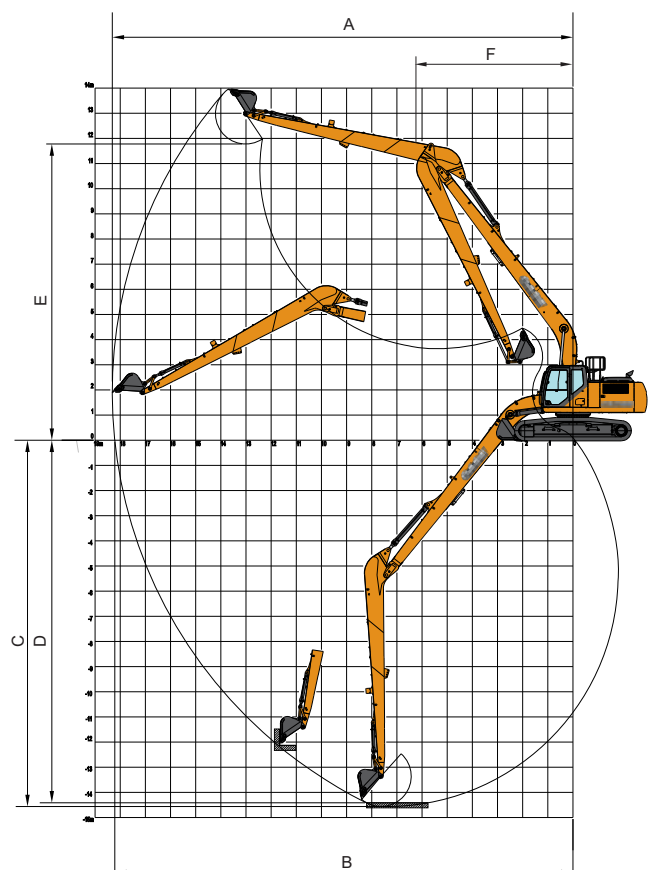
Boom length	mm	8700
Bucket radius	mm	1200
Bucket wrist action		178°
A Maximum reach at GRP	mm	15490
B Maximum reach	mm	15600
C Max. digging depth	mm	12010
D Max. digging height	mm	12970
E Max. dumping height	mm	10730
F Min. swing radius	mm	5190

### WEIGHT AND GROUND PRESSURE

with 6.40 m arm, 0.37 m³ bucket, operator, lubricant, coolant, full fuel tank and top guard OPG level 2.

	Weight	Ground pressure
800 mm grouser shoe	23600 kg	0.037 MPa

Counterweight 4.700 kg





## CX210D LC MONO

		REACH							
Front	Side	1.5 m	3.0 m	4.5 m	6.0 m	7.5 m	9.0 m	At max reach	m
									
									

### LC UNDERCARRIAGE - Short arm, 2.40 m length, 600 mm shoes, bucket of 1.0 m³ (698 kg). Maximum reach 9.42 m

7.5 m							3510 *	3510 *				3310*	3310*	7.1	
6.0 m							4620 *	4620 *	4280 *	3420		3140*	2900	8.14	
4.5 m					6290*	6290*	5200 *	4890	4800 *	3320		3120*	2460	8.76	
3.0 m					8180*	7320	6200 *	4620	4990	3190	2560*	2280	3210*	2250	9.05
1.5 m					9750*	6760	6930	4360	4850	3050	3590	2230	2400*	2200	9.05
0 m			7450 *	7450 *	10620*	6440	6760	4160	4730	2940			3690	2290	8.78
-1.5 m	8010 *	8010 *	11090 *	11090 *	10580*	6420	6690	4110	4720	2930			4090	2540	8.23
-3.0 m	11210 *	11210 *	14610 *	13150	10030*	4200							4950	3090	7.33
-4.5 m			12010 *	12010 *	8400*	6810							5450*	4360	5.96

### LC UNDERCARRIAGE - S-Short arm, 1.91 m length, 600 mm shoes, bucket of 1.0 m³ (698 kg). Maximum reach 8.96 m

7.5 m							4640 *	4640 *					4090*	4090*	6.47
6.0 m							4920 *	4920 *	4640 *	3380			3870*	3270	7.62
4.5 m					7020*	7020*	5660 *	4840	5030 *	3310			3850*	2750	8.28
3.0 m					8580*	7190	6590 *	4590	5000	3190			3960*	2500	8.59
1.5 m					10010*	6700	6970	4360	4860	3070			3910	2450	8.59
0 m					10720*	6470	6790	4200	4780	2990			4090	2560	8.31
-1.5 m			11790 *	11790 *	10560*	6510	6760	4190	4810	3020			4590	2880	7.72
-3.0 m			13750 *	13160	9730*	6670	6840 *	4330					5660*	3590	6.75
-4.5 m			10620 *	10620 *	7490*	6850*							5780*	5420	5.25

### LC UNDERCARRIAGE - Standard, 2.94 m length, 600 mm shoes, bucket of 0.90 m³ (650 kg). Maximum reach 9.90 m

7.5 m									2940 *	2940*			2230*	2230*	7.73
6.0 m									3900 *	3530			2120*	2120*	8.69
4.5 m							4720 *	4720 *	4450 *	3420	3150*	2420	2110*	2110	9.26
3.0 m			10440 *	10440 *	7630*	7390	5840 *	4740	4890 *	3270	3720	2350	2180*	2090	9.53
1.5 m			8560 *	8560 *	9480*	6950	6820 *	4460	4920	3110	3640	2270	2320*	2040	9.53
0 m			8290 *	8290 *	10490*	6550	6840	4230	4780	2990	3580	2220	2570*	2110	9.28
-1.5 m	7490 *	7490*	10750 *	10750 *	10650*	6420	6710	4130	4720	2930			2980*	2310	8.76
-3.0 m	9930 *	9930*	14740 *	13010	10350*	6500	6740	4170	4790	3000			3760*	2730	7.92
-4.5 m	13960 *	13960*	13360 *	13070 *	9200 *	6710	6580 *	4390					5310*	3640	6.67

## CX210D NLC MONO

### NLC UNDERCARRIAGE - Short arm, 2.40 m length, 500 mm shoes, bucket of 1.00 m³ (698 kg). Maximum reach 9.42 m

7.5 m							3500 *	3500 *					3310*	3290	7.12
6.0 m							4630 *	4390	4290 *	2980			3140*	2500	8.16
4.5 m					6330*	6330*	5220 *	4260	4810 *	2890			3120*	2110	8.77
3.0 m					8210*	6250	6210 *	3990	5140	2750	3580*	1950	3210*	1930	9.05
1.5 m					9770*	5730	7090 *	3740	5030	2620	3730	1900	3410*	1880	9.05
0 m			7510 *	7510 *	10620*	5440	7010	3560	4920	2520			3760*	1950	8.78
-1.5 m	8130 *	8130*	11180 *	10040	10570*	5420	6940	3510	4900	2500			4270	2180	8.22
-3.0 m	11300 *	11300*	14570 *	10710	10010*	5540	7000 *	3600					5170	2660	7.31
-4.5 m			11940 *	10900	8350 *	5830							5420*	3770	5.93

### NLC UNDERCARRIAGE - S-Short arm, 1.90 m length, 500 mm shoes, bucket of 1.00 m³ (698 kg). Maximum reach 8.96 m

7.5 m							4640 *	4490					4080*	3860	6.49
6.0 m							4940 *	4410	4660 *	2940			3870*	2840	7.63
4.5 m			6230 *	6230 *	7050*	6620*	5680 *	4210	5030 *	2880			3850*	2370	8.29
3.0 m					8610*	6140	6600 *	3970	5180	2760			3960*	2150	8.59
1.5 m					10030*	5680	7190	3750	5050	2640			4070	2100	8.59
0 m					10720*	5470	7040	3600	4970	2570			4260	2200	8.3
-1.5 m			11910 *	10250	10550*	5520	7020	3590	5000	2600			4790	2490	7.7
-3.0 m			13700 *	10960	9700*	5670	7050	3730					5660*	3110	6.73
-4.5 m			10530 *	10530 *	7420 *	5890							5760*	4700	5.21

### NLC UNDERCARRIAGE - Standard arm, 2.94 m length, 500 mm shoes, bucket of 0.90 m³ (650 kg). Maximum reach 9.90 m

7.5 m									2990 *	2990*			2230*	2230*	7.75
6.0 m									3910 *	3090			2120*	2120*	8.7
4.5 m							4740 *	4390	4450 *	2980	3170*	2090	2110*	1950	9.27
3.0 m			10530 *	10530 *	7670*	6480	5860 *	4110	4900 *	2830	3870	2020	2180*	1790	9.53
1.5 m			8480 *	8480 *	9510*	5910	6830 *	3840	5100	2680	3780	1950	2320*	1740	9.53
0 m			8330 *	8300 *	10490*	5540	7090	3630	4970	2560	3720	1890	2570*	1800	9.28
-1.5 m	7400 *	7400*	10810 *	10030	10640*	5430	6970	3530	4910	2510			2990*	1980	8.75
-3.0 m	9990 *	9990*	14830 *	10580	10340*	5500	7000	3570	4980	2580			3760*	2350	7.9
-4.5 m	14060 *	14060*	13300 *	10900	9160 *	5720	6540 *	3800					5330*	3150	6.64

\* The above loads (kg) are compliant to the ISO standards and refer to the excavator equipped with bucket. The indicated loads are no more than 87% of hydraulic system lift capacity or 75% of static tipping load. Values marked with an asterisk (\*) are limited by the hydraulic lifting capacity rather than the tipping load.

# LIFTING CAPACITY

## CX210D



## CX210D NLC 2 PIECE BOOM

	REACH												
	1.5 m	3.0 m	4.5 m	6.0 m	7.5 m	9.0 m	At max reach						
Front													
Side													

**NLC UNDERCARRIAGE - Short arm, 2.40 m length, 500 mm shoes, bucket of 1.00 m³ (698 kg). Maximum reach 9.42 m**

9.0 m					3830*	3830*							3860*	3860*	5.34
7.5 m					3740*	3740*	4630*	4630*					3330*	3290	7.12
6.0 m					6060*	6060*	4940*	4660	3980*	3050			3150*	2470	8.16
4.5 m				9900*	9900	7020*	6940	5240*	4560	4220*	3040		3110*	2060	8.77
3.0 m	13650*	13650*	14140*	12350	9240*	6790	6040*	4530	4560*	2930	3240*	1900	3080	1870	9.05
1.5 m	10000*	10000*	14750*	12190	10390*	6700	7020*	4210	4980*	2770	3350*	1830	3170*	1810	9.05
0 m	11940*	11940*	16340*	11350	10470*	6120	7250	3910	5070	2590			3420*	1880	8.77
-1.5 m	16940*	16940*	16690*	10760	10600*	5740	7250	3680	4950	2470			3870*	2110	8.21
-3.0 m	24600*	24600*	16500*	10770	10580*	5670	7060*	3580					3480*	2590	7.31
-4.5 m	26330*	26330*	13230*	11050	7580*	5710									

**NLC UNDERCARRIAGE - S-Short arm, 1.91 m length, 500 mm shoes, bucket of 1.00 m³ (698 kg). Maximum reach 8.95 m**

9.0 m													4570*	4570*	4.37
7.5 m					5720*	5720*	4940*	4580					4120*	3880	6.48
6.0 m					6540*	6540*	5110*	4660	4060*	2930			3770*	2810	7.63
4.5 m			11550*	11550*	7680*	6990	5610*	4550	4440*	2950			3530*	2320	8.28
3.0 m	13690*	13690*	14180*	12310*	9790*	6770	6420*	4450	4780*	2860			3480*	2090	8.58
1.5 m			15120*	12210*	10520*	6560	7330	4150	5140	2710			3590*	2030	8.58
0 m	12550*	12550*	16750*	11140	10580*	6050	7470	3890	5060	2570			3890*	2130	8.58
-1.5 m	19810*	19810*	16810*	10780	10770*	5750	7240	3660	4930*	2530			4180*	2410	8.29
-3.0 m	29760*	29760*	16170*	10940	10170*	5730	6180*	3680					3610*	3040	7.69
-4.5 m			10540*	10540*											6.71

**NLC UNDERCARRIAGE - Standard arm, 2.94 m length, 500 mm shoes, bucket of 1.00 m³ (698 kg). Maximum reach 9.90 m**

9.0 m					2090*	2090*	3120*	3120*					2570*	2570*	6.21
7.5 m							4210*	4210*	3040*	3040*			2250*	2250*	7.75
6.0 m							4680*	4640	3770*	3210			2130*	2130*	8.7
4.5 m			4450*	4450*	6300*	6300*	4940*	4940	4030*	3190	3020*	2070	2110*	1900	9.27
3.0 m	17060*	17060*	13250*	12580	8320*	6890	5720*	4480	4330*	3080	3430*	2020	2170*	1730	9.54
1.5 m	17100*	17100*	14700*	12210*	10320*	6780*	6680*	4370	4800*	2920	3650*	1930	2300*	1680	9.53
0 m	12030*	12030*	15940*	11770	10480*	6320	7280	4040	5090	2710	3570*	1840	2540*	1730	9.28
-1.5 m	14670*	14670*	16600*	10940	10550*	5860	7390	3780	5010	2540			2930*	1910	8.75
-3.0 m	19760*	19760*	16700*	10730	10700*	5690	7160	3600	4790*	2510			3600*	2280	7.91
-4.5 m	23450*	23450*	15230*	10960	9240*	5720	5220*	3630					3870*	3320	6.22

## CX210D LONG REACH

	REACH												
	1.5 m	3.0 m	4.5 m	6.0 m	7.5 m	9.0 m	10.5 m	12.0 m	13.5 m	15.0 m	At max reach		
Front													
Side													

**LC UNDERCARRIAGE - Super long arm, 6.40 m length, 800 mm shoes, bucket of 0.37 m³ (340 kg). Maximum reach 8.70 m**

12.0 m																								960*	960*	11.46
10.5 m																1540*	1540*							900*	900*	12.68
9.0 m																1720*	1720*	1000*	1000*					860*	860*	13.61
7.5 m																1780*	1780*	1700*	1410					850*	850*	14.31
6.0 m																1900*	1900*	1870*	1810	1810*	1370			860*	860*	14.8
4.5 m											2320*	2320*	2130*	2130*	2000*	1720	1940*	1310	1080*	970			880*	880*	15.13	
3.0 m			5330*	5330*	3470*	3470*	3820*	3820*	3150*	3150*	2720*	2720*	2420*	2110	2190*	1610	2040*	1240	1380*	930			910*	880	15.3	
1.5 m			3100*	3100*	6810*	3810*	4770*	4690	3730*	3420	3110*	2550	2690*	1950	2400*	1500	1980	1160	1480*	890			970*	840	15.31	
0 m	1090*	1090*	2320*	2320*	5800*	5800*	5580*	4240	4260*	3080	3470*	2330	2920*	1790	2350	1400	1910	1090	1360*	850			1050*	830	15.17	
-1.5 m	1830*	1830*	2690*	2690*	4860*	4860*	6150*	3870	4640	2820	3550	2150	2800	1670	2260	1310	1850	1040					1160*	840	14.87	
-3.0 m	2510*	2510*	3240*	3240*	4990*	4990*	6270	3660	4480	2660	3410	2020	2700	1580	2190	1250	1810	1000					13000*	890	14.4	
-4.5 m	3190*	3190*	3890*	3890*	5550*	5450	6200	3610	4400	2590	3350*	1960	2660	1530	2170	1230	1810	1010					1510*	970	13.76	
-6.0 m	3830*	3830*	4650*	4650*	6390*	5700	6220	3640	4400	2600	3350	1970	2660	1540	2190	1250							1820*	1110	12.91	
-7.5 m	4770*	4770*	5780*	5780*	7760*	5870	6200*	3750	4470	2670	3400	2030	2730	1610									2290	1330	11.81	
-9.0 m	5620*	5620*	7140*	7140*	7450*	6130	5650*	3930	4460*	2820	3490	2170											2790*	1710	10.39	
-10.5 m			8350*	8350*	6110*	6110*	4670*	4200	3620*	3070														2940*	2450	8.51

\* The above loads (kg) are compliant to the ISO standards and refer to the excavator equipped with bucket. The indicated loads are no more than 87% of hydraulic system lift capacity or 75% of static tipping load. Values marked with an asterisk (\*) are limited by the hydraulic lifting capacity rather than the tipping load.



# CX D-SERIES

## CX250D LC-NLC

### ENGINE

Model \_\_\_\_\_ ISUZU AQ-4HK1X  
 Type \_\_\_\_\_ Water-cooled, 4-cycle  
 diesel, 4-cylinder in line, High pressure common rail system (electric control), Turbocharger with air cooled intercooler, SCR system.  
 Number of cylinders / Displacement (l) \_\_\_\_\_ 4 / 5,52  
 Emissions level \_\_\_\_\_ Tier 4 final / Eu stage IV  
 Bore & stroke (mm) \_\_\_\_\_ 115 x 125  
**Rated flywheel horse power**  
 SAE J 1349, ISO 9249 \_\_\_\_\_ 132.1 kW at 2000 min<sup>-1</sup>  
 ISO 14396 \_\_\_\_\_ 140 kW at 2000 min<sup>-1</sup>  
**Maximum torque**  
 SAE J 1349, ISO 9249 \_\_\_\_\_ 621 N-m at 1800 min<sup>-1</sup>  
 ISO 14396 \_\_\_\_\_ 642 N-m at 1800 min<sup>-1</sup>

### HYDRAULIC SYSTEM

Main pumps \_\_\_\_\_ 2 variable displacement axial piston pumps with regulating system  
 Max. oil flow \_\_\_\_\_ 2 x 243 l/min at 2000 min<sup>-1</sup>  
**Working circuit pressure**  
 Boom/Arm/Bucket \_\_\_\_\_ 34.3 MPa - 37.3 MPa with auto power boost  
 Swing circuit \_\_\_\_\_ 28.9 MPa  
 Travel circuit \_\_\_\_\_ 34.3 MPa  
 Pilot pump \_\_\_\_\_ 1 gear pump  
 Max. oil flow (l/min) \_\_\_\_\_ 20  
 Working circuit pressure \_\_\_\_\_ 3.9 MPa  
**Boom Cylinders**  
 Bore \_\_\_\_\_ 130 mm  
 Stroke \_\_\_\_\_ 1335 mm  
**Arm Cylinder**  
 Bore \_\_\_\_\_ 145 mm  
 Stroke \_\_\_\_\_ 1660 mm  
**Bucket Cylinder**  
 Bore \_\_\_\_\_ 130 mm  
 Stroke \_\_\_\_\_ 1070 mm

### PERFORMANCE DATA

		Arm 3.00 m	Arm 2.50 m	Arm 3.52 m
Boom length	mm	5850	5850	5850
Bucket radius	mm	1570	1570	1570
Bucket wrist action	°	175°	175°	175°
A Maximum reach at GRP	mm	10100	9630	10620
B Maximum reach	mm	10280	9820	10790
C Max. digging depth	mm	6900	6400	7420
D Max. digging height	mm	9760	9560	10070
E Max. dumping height	mm	6760	6550	7060
F Min. swing radius	mm	4030	3980	4050

### DIGGING FORCE (ISO 6015)

		Arm 3.00 m	Arm 2.50 m	Arm 3.52 m
Arm digging force	kN	120	141	107
with Auto power boost	kN	130	153	116
Bucket digging force	kN	162	162	162
with Auto power boost	kN	176	176	176

### SWING

Swing Motor \_\_\_\_\_ Fixed displacement axial piston motor  
 Maximum swing speed \_\_\_\_\_ 10.6 min<sup>-1</sup>  
 Swing torque \_\_\_\_\_ 74,900 Nm

### FILTERS

Suction filter \_\_\_\_\_ 105 µm  
 Return filter \_\_\_\_\_ 6 µm  
 Pilot line filter \_\_\_\_\_ 8 µm

### ELECTRICAL SYSTEM

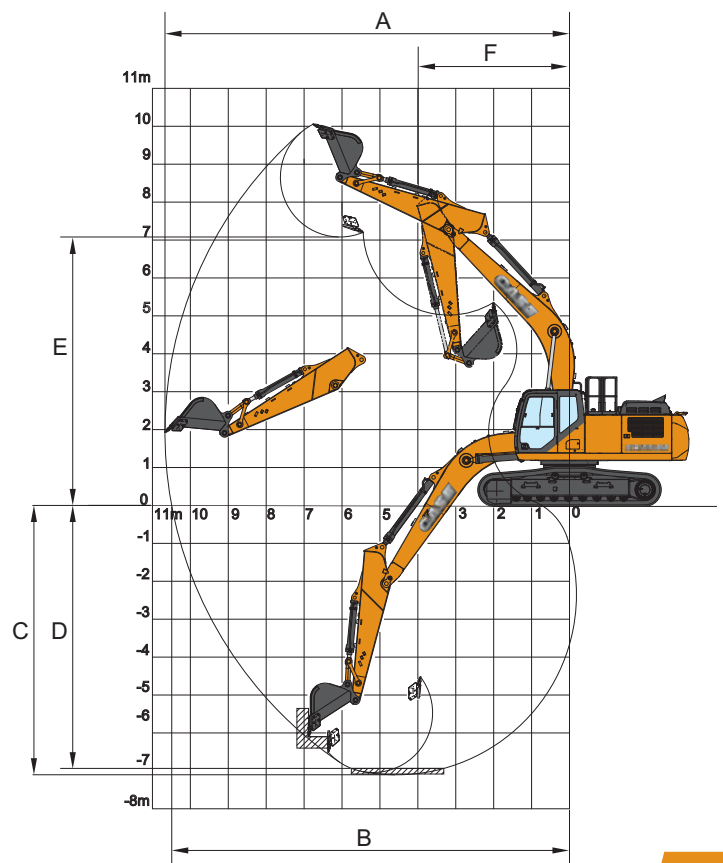
Voltage \_\_\_\_\_ 24 V  
 Alternator \_\_\_\_\_ 50 Amp  
 Starter \_\_\_\_\_ 24 V 5.0 kW  
 Battery \_\_\_\_\_ 2X12V 128 Ah/5 HR

### UNDERCARRIAGE

Travel motor \_\_\_\_\_ Variable displacement axial piston motor  
 High travel speed (Automatic travel speed shifting) (km/h) \_\_\_\_\_ 5.5  
 Low travel speed (km/h) \_\_\_\_\_ 3.5  
 Drawbar pull (kN) \_\_\_\_\_ 200  
 Number of carrier rollers (each side) \_\_\_\_\_ 2  
 Number of track rollers (each side) \_\_\_\_\_ 9  
 Number of shoes (each side) \_\_\_\_\_ 51  
 Type of shoe \_\_\_\_\_ Triple grouser shoe  
 Grade ability \_\_\_\_\_ 70 % (35°)

### CIRCUIT AND COMPONENT CAPACITIES

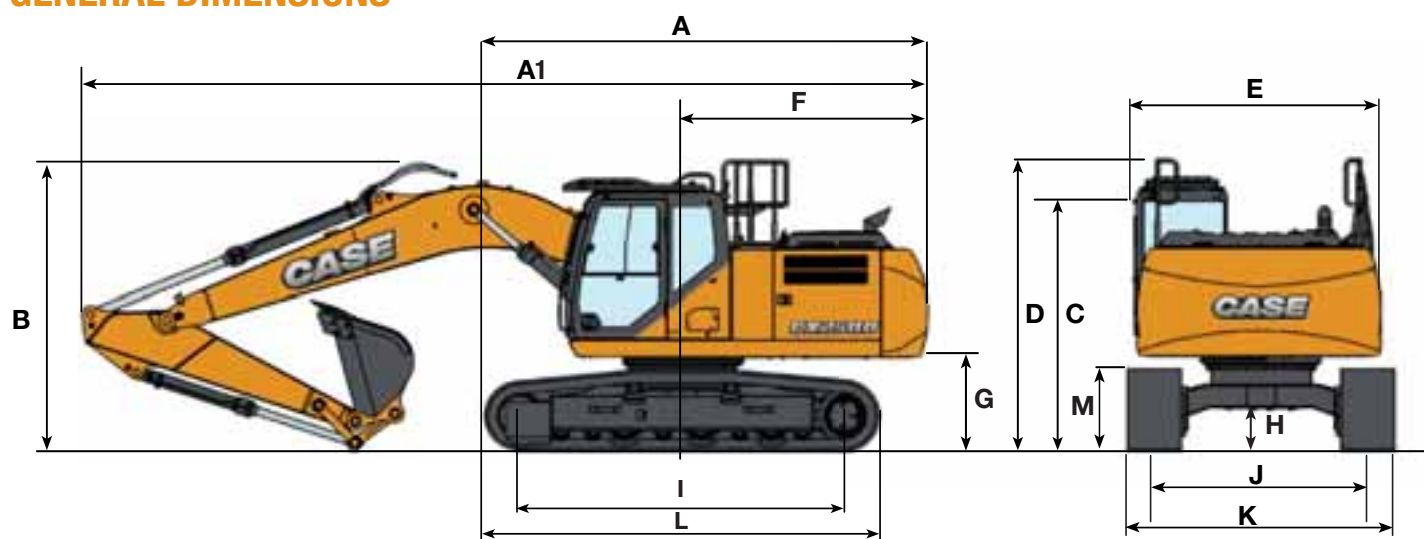
Fuel tank \_\_\_\_\_ 320 l  
 Hydraulic system \_\_\_\_\_ 220 l  
 Hydraulic tank \_\_\_\_\_ 117 l  
 Adblue tank \_\_\_\_\_ 85 l



# CX D-SERIES

## CX250D LC-NLC

### GENERAL DIMENSIONS



			Arm 3.00 m	Arm HD 2.50 m	Arm 3.52 m
A	Overall length (without attachment)	mm	5270 mm	5270 mm	5270 mm
A1	Overall length (with attachment)	mm	9880 mm	9950 mm	9910 mm
B	Overall height (to top of boom)	mm	3200 mm	3350 mm	3360 mm
C	Cab height	mm	3130 mm	3130 mm	3130 mm
D	Overall height (to top of guardrail)	mm	3340 mm	3340 mm	3340 mm
E	Upper structure overall width (LC/NLC)	mm	2770 mm	2770 mm	2770 mm
F	Swing (rear end radius)	mm	2950 mm	2950 mm	2950 mm
G	Clearance height under upper structure	mm	1100 mm	1100 mm	1100 mm
H	Minimum ground clearance	mm	440 mm	440 mm	440 mm
I	Wheel base (Center to center of wheels)	mm	3840 mm	3840 mm	3840 mm
L	Crawler overall length	mm	4650 mm	4650 mm	4650 mm
M	Crawler tracks height	mm	940 mm	940 mm	940 mm
J	Track gauge (LC/NLC)	mm	2590 / 2390 mm	2590 / 2390 mm	2590 / 2390 mm
K	Undercarriage overall width (LC/NLC with 600 mm shoe)	mm	3190 / 2990 mm	3190 / 2990 mm	3190 / 2990 mm

### WEIGHT AND GROUND PRESSURE

with 3.00 m Arm, 1.1 m<sup>3</sup> bucket, operator, lubricant, coolant, full fuel tank and top guard OPG level 2.

LC	Weight	Ground pressure
600 mm grouser shoe	25.400 kg	0.050 MPa
700 mm grouser shoe	25.700 kg	0.044 MPa
800 mm grouser shoe	26.000 kg	0.039 MPa
900 mm grouser shoe	26.400 kg	0.035 MPa

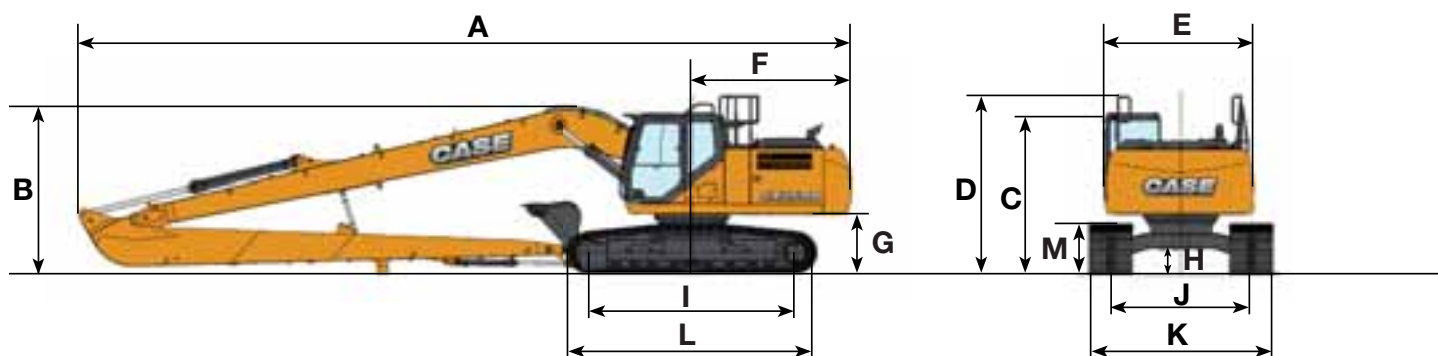
NLC	Weight	Ground pressure
600 mm grouser shoe	25.300 kg	0.050 MPa
700 mm grouser shoe	25.600 kg	0.043 MPa

Counter weight 5.220 kg

# CX D-SERIES

## CX250D LONG REACH

### GENERAL DIMENSIONS



#### Arm 8.00 m

Overall length (without attachment)	mm	5270
A Overall length (with attachment)	mm	14380
B Overall height (to top of boom)	mm	3130
C Cab height	mm	3020
D Overall height (to top of guardrail)	mm	3340
E Upper structure overall width	mm	2770
F Swing (rear end radius)	mm	2950
G Clearance height under upper structure	mm	1100
H Minimum ground clearance	mm	440
I Wheel base (Center to center of wheels)	mm	3840
L Crawler overall length	mm	4650
M Crawler tracks height	mm	940
J Track gauge	mm	2590
K Undercarriage overall width (LC with 500 mm shoes)	mm	3390

### DIGGING FORCE (ISO 6015)

#### Arm 8.00 m

Arm digging force	40.0 kN
Bucket digging force	77 kN

### PERFORMANCE DATA

#### Arm 8.00 m

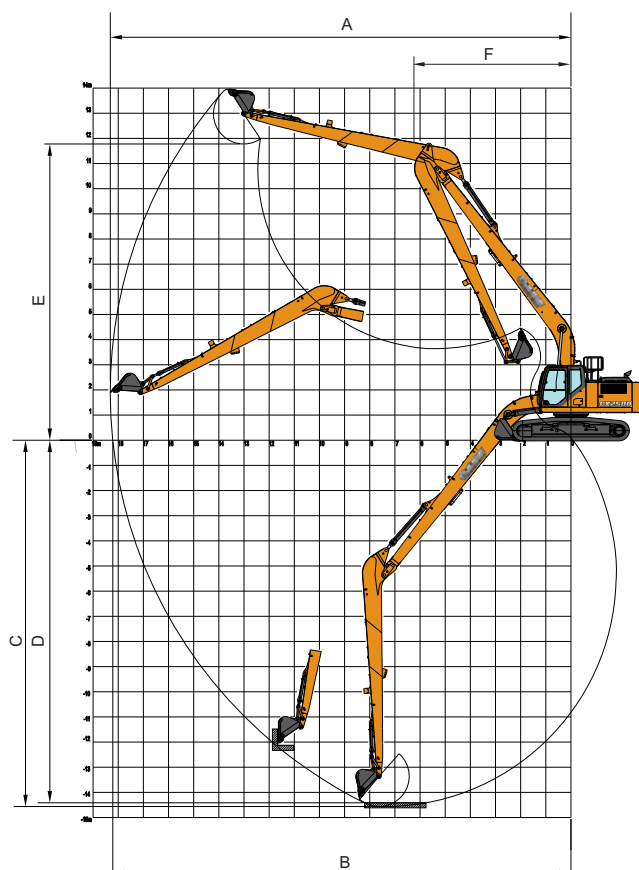
Boom length	mm	10300
Bucket radius	mm	1200
Bucket wrist action	°	178
A Maximum reach at GRP	mm	18220
B Maximum reach	mm	18320
C Max. digging depth	mm	14560
D Max. digging height	mm	13950
E Max. dumping height	mm	11780
F Min. swing radius	mm	6220

### WEIGHT AND GROUND PRESSURE

With 8.00 m Arm, 0.37 m<sup>3</sup> bucket, operator, lubricant, coolant, full fuel tank and top guard OPG level 2.

	Weight	Ground pressure
800 mm grouser shoe	28.100 kg	0.042 MPa















Counterweight 7.350 kg





# CX D-SERIES

## CX250D

		REACH							
Front	Side	1.5 m	3.0 m	4.5 m	6.0 m	7.5 m	9.0 m	At max reach	m
									
									

### LC UNDERCARRIAGE - Short arm, 2.63 m length, 500 mm shoes, bucket of 1.30 m³ (870 kg). Maximum reach 10.70 m

7.5 m									4200 *	4200 *			3490 *	3490 *	7.64
6.0 m									5410 *	4580			3320 *	3320	8.61
4.5 m					6350 *	6350 *	6740 *	6460	6100 *	4440	4410 *	3160	3290 *	3020	9.18
3.0 m			12760 *	12760 *	10260 *	9760	7960 *	6170	6400	4260	4690	3080	3370 *	2800	9.44
1.5 m					12270 *	9070	8920	5820	6220	4080	4600	2990	3560 *	2750	9.42
0 m			8630 *	8630 *	13610 *	8650	8690	5570	6060	3940	4540	2940	3880 *	2860	9.16
-1.5 m	9780 *	9780 *	12250 *	12250 *	13540 *	8600	8580	5780	6010	3900			4460 *	3150	8.63
-3.0 m	12290 *	12290 *	17720 *	17240	12900 *	8720	8650	5560	6140	4020			5520 *	3730	7.79
-4.5 m	17710 *	17710 *	15710 *	15710 *	11070 *	9010	7870 *	5840					6530 *	4990	6.53

### NLC UNDERCARRIAGE - Short arm, 2.50 m length, 600 mm shoes, bucket of 1.10 m³ (810 kg). Maximum reach 9.85 m

7.5 m									4200 *	4200 *			3490 *	3490 *	7.64
6.0 m									5410 *	4190			3320 *	3170	8.61
4.5 m					6350 *	6350 *	6740 *	5960	6100 *	4050	4410 *	2860	3290 *	2740	9.18
3.0 m			12760 *	12760 *	10260 *	8880	7960 *	5620	6390	3870	4670	2780	3370 *	2520	9.44
1.5 m					12270 *	8170	8900	5280	6200	3690	4580	2700	2560 *	2480	9.42
0 m			8630 *	8630 *	13610 *	7760	8670	5030	6040	3560	4520	2640	3880 *	2570	9.16
-1.5 m	9780 *	9780 *	12250 *	12250 *	13540 *	7720	8550	4940	6000	3510			4460 *	2830	8.63
-3.0 m	12290 *	12290 *	17720 *	15830	12900 *	7840	8620	5020	4120	3640			5520 *	3370	7.79
-4.5 m	17710 *	17710 *	15710 *	15650	11070 *	8130	7870 *	5340					6530 *	4520	6.53

### LC UNDERCARRIAGE - Standard arm, 3.00 m length, 600 mm shoes, bucket of 1.10 m³ (810 kg). Maximum reach 10.30 m

7.5 m									4210 *	4210 *			2410 *	2410 *	8.23
6.0 m									4870 *	4710	2880 *	2880 *	2280 *	2280 *	9.12
4.5 m							6260 *	6260 *	5710 *	4560	4540 *	3260	2270 *	2270 *	9.66
3.0 m			13600 *	13600 *	9850 *	9820	7550 *	6320	6370 *	4360	4770	3160	2330 *	2330	9.9
1.5 m			9530 *	9530 *	12180 *	9310	8770 *	5950	6310	4160	4660	3050	2470 *	2470	9.89
0 m			9380 *	9380 *	13450 *	8780	8790	5660	6130	4000	4570	2970	2710 *	2650	9.64
-1.5 m	9010 *	9010 *	11970 *	11970 *	13640 *	8620	8620	5510	6030	3910	4220 *	2960	3110 *	2890	9.13
-3.0 m	11110 *	11110 *	16090 *	16090 *	13270 *	8690	8640	5540	6090	3980			3820 *	3360	8.34
-4.5 m	15320 *	15320 *	17250 *	17250 *	11910 *	8910	8650 *	5750					5270 *	4310	7.18
-6.0 m			12420 *	12420 *	8540 *	8540 *							6070 *	6070 *	5.44

### NLC UNDERCARRIAGE - Standard arm, 3.00 m length, 600 mm shoes, bucket of 1.10 m³ (810 kg). Maximum reach 10.30 m

7.5 m									4210 *	4210 *			2410 *	2410 *	8.23
6.0 m									4870 *	4870 *	2880 *	2880 *	2280 *	2280 *	9.12
4.5 m							6260 *	6240	5720 *	4170	4540 *	2960	2270 *	2270 *	9.66
3.0 m			13600 *	13600 *	9840 *	9080	7550 *	5770	6370 *	3970	4760	2860	2330 *	2330 *	9.9
1.5 m			9530 *	9530 *	12180 *	8400	8770 *	5400	6290	2780	4650	2760	2470 *	2310	9.89
0 m			9390 *	9390 *	13450 *	7900	8760	5120	6110	3620	4560	2680	2710 *	2380	9.64
-1.5 m	9010 *	9010 *	11970 *	11970 *	13640 *	7740	8590	4970	6010	3530	4220 *	2670	3110 *	2600	9.13
-3.0 m	11110 *	11110 *	16090 *	15060	13270 *	7810	8610	5010	6070	3590			3820 *	3030	8.34
-4.5 m	15320 *	15320 *	17250 *	15890	11910 *	8040	8630	5220					5270 *	3900	7.18
-6.0 m			12420 *	12420 *	8540 *	8190							6100 *	6100 *	5.44

\* The above loads (kg) are compliant to the ISO standards and refer to the excavator equipped with bucket. The indicated loads are no more than 87% of hydraulic system lift capacity or 75% of static tipping load. Values marked with an asterisk (\*) are limited by the hydraulic lifting capacity rather than the tipping load.

# LIFTING CAPACITY

## CX250D

	REACH													
	1.5 m	3.0 m	4.5 m	6.0 m	7.5 m	9.0 m	At max reach							
Front														
Side														

**LC UNDERCARRIAGE - Long arm, 3.52 m length, 600 mm shoes, bucket of 1.00 m<sup>3</sup> (698 kg). Maximum reach 10.80 m**

9.0 m									2270 *	2270 *			2160 *	2160 *	7.57
7.5 m									3350 *	3350 *			1920 *	1920 *	8.85
6.0 m									4400 *	4400 *			3540 *	3370	9.68
4.5 m									5240 *	4620	4360 *	3290	1800 *	1800 *	10.18
3.0 m					8890 *	8890 *	7010 *	6400 *	5950 *	4410	4800	3180	1850 *	1850 *	10.41
1.5 m			13590 *	13590 *	11370 *	9490	8310 *	6020	6340	4180	4670	3050	1950 *	1950 *	10.4
0 m	4330 *	4330 *	9830 *	9830 *	13020 *	8850	8820	5680	6130	3990	4550	2950	2140 *	2140 *	10.16
-1.5 m	7750 *	7750 *	11450 *	11450 *	13570 *	8560	8580	5470	5990	3870	4490	2900	2440 *	2440 *	9.68
-3.0 m	9950 *	9950 *	14690 *	14690 *	13390 *	8570	8550	5450	6000	3880			2950 *	2950 *	8.94
-4.5 m	14510 *	14510 *	14690 *	18380 *	8570	12450 *	5450	8630 *	3880	6100			3920 *	3670	7.86
-6.0 m			14500 *	14500 *	9990 *	8960	6770 *	5790					5930 *	5310	6.3

**NLC UNDERCARRIAGE - Long arm, 3.52 m length, 600 mm shoes, bucket of 1.10 m<sup>3</sup> (810 kg). Maximum reach 10.80 m**

9.0 m									2270 *	2270 *			2160 *	2160 *	7.57
7.5 m									3350 *	3350 *			1920 *	1920 *	8.85
6.0 m									4400 *	4310	3540 *	3070	1820 *	1820 *	9.68
4.5 m									5240 *	4230	4360 *	2990	1800 *	1800	10.18
3.0 m					8890 *	8890 *	7010 *	5860	5950 *	4020	4780	2880	1850 *	1850 *	10.41
1.5 m			13590 *	13590 *	11370 *	8570	8310 *	5470	6320	3800	4650	2760	1950 *	1950 *	10.4
0 m	4330 *	4330 *	9830 *	9830 *	13020 *	7960	8800	5140	6110	3610	4540	2560	2140 *	2140 *	10.16
-1.5 m	7750 *	7750 *	11450 *	11450 *	13570 *	7680	8560	4930	5970	3490	4480	2600	2440 *	2310	9.68
-3.0 m	9950 *	9950 *	14690 *	14690 *	13390 *	7700	8530	4920	5980	3500			2950 *	2650	8.94
-4.5 m	14510 *	14510 *	18380 *	15730	12450 *	7870	8610	5060	6080	3650			3920 *	3320	7.86
-6.0 m		14500 *	14500 *	9990 *	8170	6770 *	5290						5930 *	4800	6.3

## LONG REACH

	REACH													
	1.5 m	3.0 m	4.5 m	6.0 m	7.5 m	9.0 m	10.5 m	12.0 m	13.5 m	15.0 m	16.5 m	18.0 m	At max reach	
Front														
Side														

**LC UNDERCARRIAGE - Super long arm, 8.0 m length, 800 mm shoes, bucket of 0.37 m<sup>3</sup> (340 kg). Maximum reach 18.30 m**

12.0 m																																																																																																																																																																																																																																																																																																																																																																																																																																																																																																																																																																																																																																																																																																																																																																																																																																																																																																																																																																																																																																																																																																																																																																																																																																																																																																																																																																																																																																																																																																																																																																																																																																																																																																																																																																																																																																														
--------	--	--	--	--	--	--	--	--	--	--	--	--	--	--	--	--	--	--	--	--	--	--	--	--	--	--	--	--	--	--	--	--	--	--	--	--	--	--	--	--	--	--	--	--	--	--	--	--	--	--	--	--	--	--	--	--	--	--	--	--	--	--	--	--	--	--	--	--	--	--	--	--	--	--	--	--	--	--	--	--	--	--	--	--	--	--	--	--	--	--	--	--	--	--	--	--	--	--	--	--	--	--	--	--	--	--	--	--	--	--	--	--	--	--	--	--	--	--	--	--	--	--	--	--	--	--	--	--	--	--	--	--	--	--	--	--	--	--	--	--	--	--	--	--	--	--	--	--	--	--	--	--	--	--	--	--	--	--	--	--	--	--	--	--	--	--	--	--	--	--	--	--	--	--	--	--	--	--	--	--	--	--	--	--	--	--	--	--	--	--	--	--	--	--	--	--	--	--	--	--	--	--	--	--	--	--	--	--	--	--	--	--	--	--	--	--	--	--	--	--	--	--	--	--	--	--	--	--	--	--	--	--	--	--	--	--	--	--	--	--	--	--	--	--	--	--	--	--	--	--	--	--	--	--	--	--	--	--	--	--	--	--	--	--	--	--	--	--	--	--	--	--	--	--	--	--	--	--	--	--	--	--	--	--	--	--	--	--	--	--	--	--	--	--	--	--	--	--	--	--	--	--	--	--	--	--	--	--	--	--	--	--	--	--	--	--	--	--	--	--	--	--	--	--	--	--	--	--	--	--	--	--	--	--	--	--	--	--	--	--	--	--	--	--	--	--	--	--	--	--	--	--	--	--	--	--	--	--	--	--	--	--	--	--	--	--	--	--	--	--	--	--	--	--	--	--	--	--	--	--	--	--	--	--	--	--	--	--	--	--	--	--	--	--	--	--	--	--	--	--	--	--	--	--	--	--	--	--	--	--	--	--	--	--	--	--	--	--	--	--	--	--	--	--	--	--	--	--	--	--	--	--	--	--	--	--	--	--	--	--	--	--	--	--	--	--	--	--	--	--	--	--	--	--	--	--	--	--	--	--	--	--	--	--	--	--	--	--	--	--	--	--	--	--	--	--	--	--	--	--	--	--	--	--	--	--	--	--	--	--	--	--	--	--	--	--	--	--	--	--	--	--	--	--	--	--	--	--	--	--	--	--	--	--	--	--	--	--	--	--	--	--	--	--	--	--	--	--	--	--	--	--	--	--	--	--	--	--	--	--	--	--	--	--	--	--	--	--	--	--	--	--	--	--	--	--	--	--	--	--	--	--	--	--	--	--	--	--	--	--	--	--	--	--	--	--	--	--	--	--	--	--	--	--	--	--	--	--	--	--	--	--	--	--	--	--	--	--	--	--	--	--	--	--	--	--	--	--	--	--	--	--	--	--	--	--	--	--	--	--	--	--	--	--	--	--	--	--	--	--	--	--	--	--	--	--	--	--	--	--	--	--	--	--	--	--	--	--	--	--	--	--	--	--	--	--	--	--	--	--	--	--	--	--	--	--	--	--	--	--	--	--	--	--	--	--	--	--	--	--	--	--	--	--	--	--	--	--	--	--	--	--	--	--	--	--	--	--	--	--	--	--	--	--	--	--	--	--	--	--	--	--	--	--	--	--	--	--	--	--	--	--	--	--	--	--	--	--	--	--	--	--	--	--	--	--	--	--	--	--	--	--	--	--	--	--	--	--	--	--	--	--	--	--	--	--	--	--	--	--	--	--	--	--	--	--	--	--	--	--	--	--	--	--	--	--	--	--	--	--	--	--	--	--	--	--	--	--	--	--	--	--	--	--	--	--	--	--	--	--	--	--	--	--	--	--	--	--	--	--	--	--	--	--	--	--	--	--	--	--	--	--	--	--	--	--	--	--	--	--	--	--	--	--	--	--	--	--	--	--	--	--	--	--	--	--	--	--	--	--	--	--	--	--	--	--	--	--	--	--	--	--	--	--	--	--	--	--	--	--	--	--	--	--	--	--	--	--	--	--	--	--	--	--	--	--	--	--	--	--	--	--	--	--	--	--	--	--	--	--	--	--	--	--	--	--	--	--	--	--	--	--	--	--	--	--	--	--	--	--	--	--	--	--	--	--	--	--	--	--	--	--	--	--	--	--	--	--	--	--	--	--	--	--	--	--	--	--	--	--	--	--	--	--	--	--	--	--	--	--	--	--	--	--	--	--	--	--	--	--	--	--	--	--	--	--	--	--	--	--	--	--	--	--	--	--	--	--	--	--	--	--	--	--	--	--	--	--	--	--	--	--	--	--	--	--	--	--	--	--	--	--	--	--	--	--	--	--	--	--	--	--	--	--	--	--	--	--	--	--	--	--	--	--	--	--	--	--	--	--	--	--	--	--	--	--	--	--	--	--	--	--	--	--	--	--	--	--	--	--	--	--	--	--	--	--	--	--	--	--	--	--	--	--	--	--	--	--	--	--	--	--	--	--	--	--	--	--	--	--	--	--	--	--	--	--	--	--	--	--	--	--	--	--	--	--	--	--	--	--	--	--	--	--	--	--	--	--	--	--	--	--	--	--	--	--	--	--	--	--	--	--	--	--	--	--	--	--	--	--	--	--	--	--	--	--	--	--	--	--	--	--	--	--	--	--	--	--	--	--	--	--	--	--	--	--	--	--	--	--	--	--	--	--	--	--	--	--	--	--	--	--	--	--	--	--	--	--	--	--	--	--	--	--	--	--	--	--	--	--	--	--	--	--	--	--	--	--	--	--	--	--	--	--	--	--	--	--	--	--	--	--	--	--	--	--	--	--	--	--	--	--	--	--	--	--	--	--	--	--	--	--	--	--	--	--	--	--	--	--	--	--	--	--	--	--	--	--	--	--	--	--	--	--	--	--	--	--	--	--	--	--	--	--	--	--	--	--	--	--	--	--	--	--	--	--	--	--	--	--	--	--	--	--	--	--	--	--	--	--	--	--	--	--	--	--	--	--	--	--	--	--	--	--	--	--	--	--	--	--	--	--	--	--	--	--	--	--	--	--	--	--	--	--	--	--	--	--	--	--	--	--	--	--	--	--	--	--	--	--	--	--	--	--	--	--	--	--	--	--	--	--	--	--	--	--	--	--	--	--	--	--	--	--	--	--	--	--	--	--	--	--	--	--	--	--	--	--	--	--	--	--	--	--	--	--	--	--	--	--	--	--	--	--	--	--	--	--	--	--	--	--	--	--	--	--	--	--	--	--	--	--	--	--	--	--	--	--	--	--	--	--	--	--	--	--	--	--	--	--	--	--	--	--	--	--	--	--	--	--	--	--	--	--	--	--	--	--	--	--	--	--	--	--	--	--	--	--	--	--	--	--	--	--	--	--	--	--	--	--	--	--	--	--	--	--	--	--	--	--	--	--	--	--	--	--	--	--	--	--	--	--	--	--	--	--	--	--	--	--	--	--	--	--	--	--	--	--	--	--	--	--	--	--	--	--	--	--	--	--	--	--	--	--	--	--	--	--	--	--	--	--	--	--	--	--	--	--	--	--	--	--	--	--	--	--	--	--	--	--	--	--	--	--	--	--	--	--	--	--	--	--	--	--	--	--	--	--	--	--	--	--	--	--	--	--	--	--	--	--	--	--	--	--	--	--	--	--	--	--	--	--	--	--	--	--	--	--	--	--	--	--	--	--	--	--	--	--	--	--	--	--	--	--	--	--	--	--	--	--	--	--	--	--	--	--	--	--	--	--	--	--	--	--	--	--	--	--	--	--	--	--	--	--	--	--	--	--	--	--	--	--	--	--	--	--	--	--	--	--	--	--	--	--	--	--	--	--	--	--	--	--	--	--	--	--	--	--	--	--	--	--	--	--	--	--	--	--	--	--	--	--	--	--	--	--	--	--	--	--	--	--	--	--	--	--	--	--	--	--	--	--	--	--	--	--	--	--	--	--	--	--	--	--	--	--	--	--	--	--	--	--	--	--	--	--	--	--	--	--	--	--	--	--	--	--	--	--	--	--	--	--	--	--	--	--	--	--	--	--	--	--	--	--

\* The above loads (kg) are compliant to the ISO standards and refer to the excavator equipped with bucket. The indicated loads are no more than 87% of hydraulic system lift capacity or 75% of static tipping load. Values marked with an asterisk (\*) are limited by the hydraulic lifting capacity rather than the tipping load.







www.casece.com

**EXPERTS FOR THE REAL WORLD**  
**SINCE 1842**

**CASE**  
CONSTRUCTION



Form No. 201265B - Printed in Italy - MediaCross Firenze - 10/15

**CNH INDUSTRIAL  
DEUTSCHLAND GMBH**  
Case Baumaschinen  
Benzstr. 1-3 - D-74076 Heilbronn  
DEUTSCHLAND

**CNH INDUSTRIAL FRANCE, S.A.**  
16-18 Rue des Rochettes  
91150 Morigny-Champigny  
FRANCE

**CNH INDUSTRIAL - UK**  
First Floor, Barclay Court 2,  
Heavens Walk,  
Doncaster - DN4 5HZ  
UNITED KINGDOM

**CNH INDUSTRIAL - SOUTH AFRICA**  
Waterfall Business Park  
Bekker Street, Howick Close  
1685 Midrand - Johannesburg  
REPUBLIC OF SOUTH AFRICA

**CNH INDUSTRIAL  
MAQUINARIA SPAIN, S.A.**  
Avda. José Gárate, 11  
28823 Coslada (Madrid)  
ESPAÑA

**CNH INDUSTRIAL ITALIA SPA**  
Strada di Settimo, 323  
10099 San Mauro Torinese (TO)  
ITALIA

**CASE CUSTOMER CENTRE  
PARIS**  
RN 330 - Penchard  
77122 - Monthyon  
FRANCE

**CNH INDUSTRIAL - MIDDLE EAST**  
DAFZA - Dubai Airport Free Zone  
West Wing 4 B, Office 642  
P.O. Box 54588, Dubai,  
UNITED ARAB EMIRATES

**NOTE:** Standard and optional fittings can vary according to the demands and specific regulations of each country. The illustrations may include optional rather than standard fittings - consult your Case dealer. Furthermore, CNH Industrial reserves the right to modify machine specifications without incurring any obligation relating to such changes.

Conforms to directive 2006/42/EC

**CASE** Customer Assistance  
**00800-2273-7373**

The call is free from a land line.  
Check in advance with your Mobile Operator if you will be charged. Toll free number not available from all calling areas.